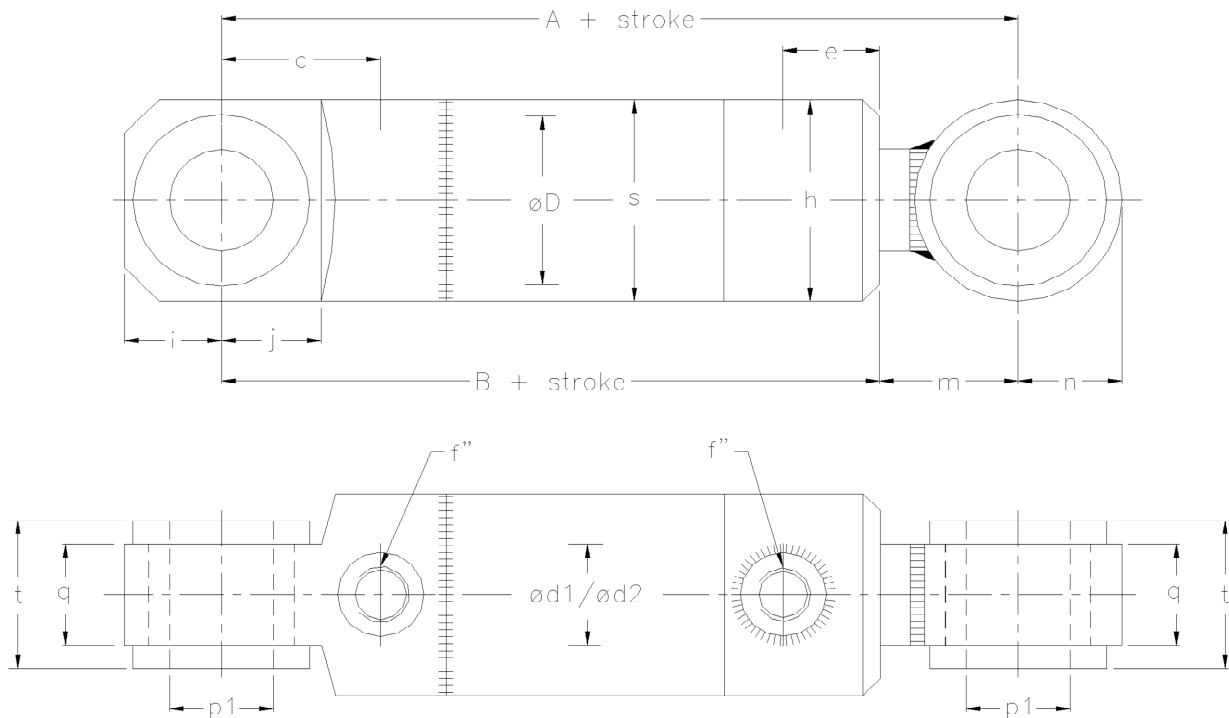


SR20 NN cylinders



Dimension table

øD	25	32	40	50	63	80
ød1/ød2	12/16	16	20/25	25/30	30/40	40/50
A	135	154	185	217	225	265
B	96	125	150	178	180	213
c	20	23	36	46	38	50
e	26	28	25	28	28	39
f''	1/8"	1/4"	1/4"	3/8"	3/8"	1/2"
h	40	50	50	60	75	100
i	12	18	25	28	35	40
j	13	23	23	29	35	38
m	39	29	35	39	45	52
n	14	19	25	30	35	45
p1	10	15	20	30	30	40
q	15	20	25	30	35	45
s	30	40	50	60	75	95
t	15	20	35	44	50	60

How to order:



SR20 NN **x1** / **x2** * **x3** K

x1: Inside diameter : 50 mm
x2: Piston rod : 30 mm
x3: Stroke : 200 mm

Ordering code: **SR20 NN 50/30*200**

Eksempel på ordre:



SR20 NN **x1** / **x2** * **x3** K

x1: Indvendig diameter : 50 mm
x2: Stempelstang : 30 mm
x3: Slaglængde : 200 mm

Ordre kode: **SR20 NN 50/30*200 K**